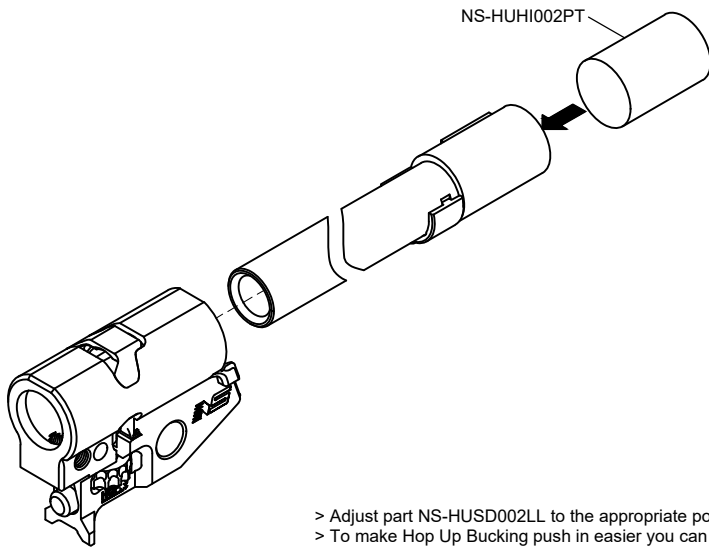
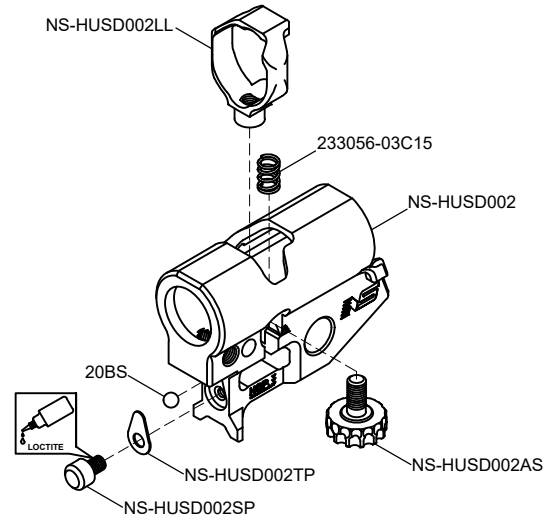
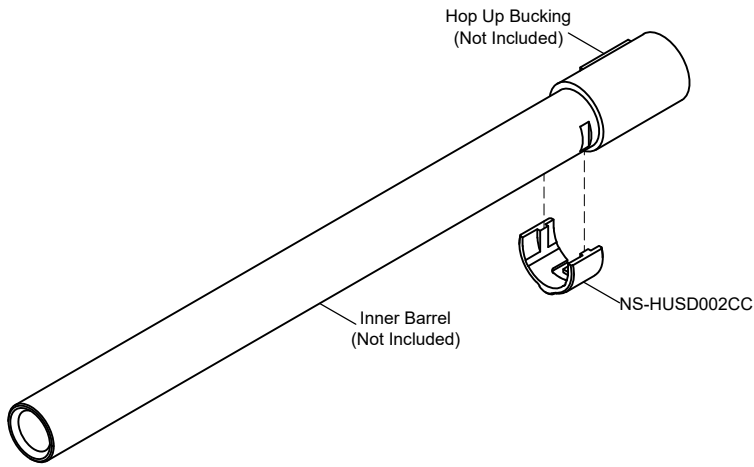


CNC Aluminum Hop Up Chamfer INSTRUCTION

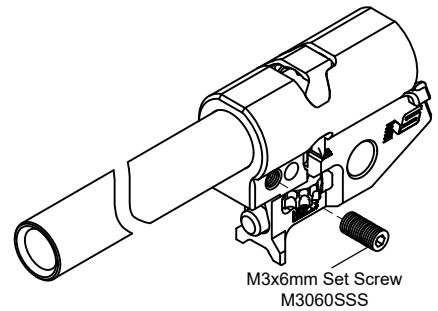
NEXXSPEED

COPYRIGHT © 2025 NEXXSPEED®

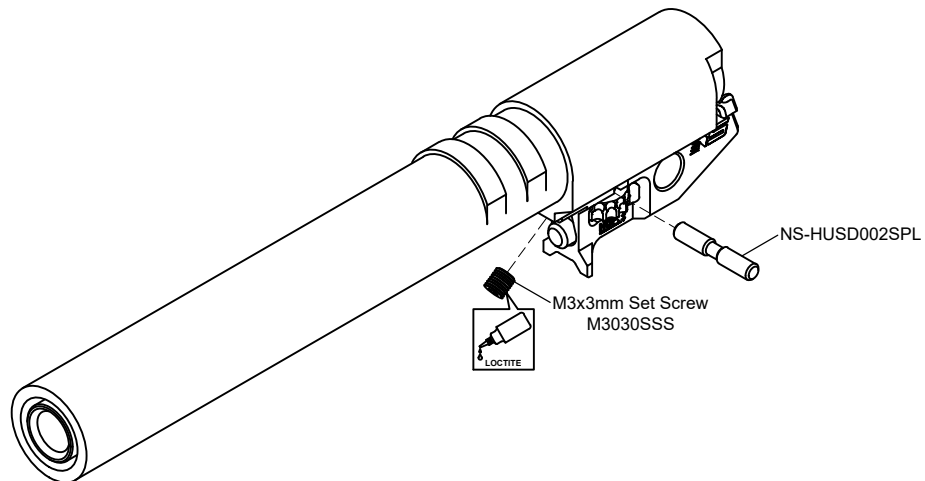
1 CNC ALUMINUM HOP UP CHAMFER NS-HUSD002



> Adjust part NS-HUSD002LL to the appropriate position.
> To make Hop Up Bucking push in easier you can use NS-HUHI002PT to assist in pushing forward.



> Pull Inner Barrel all the way forward then tighten M3x6mm Set Screw



CAUTION: Please check your model carefully before functioning!

REV. HISD002-030225-01